

● **jaltest**
TELEMATICS

CV
COMMERCIAL

● **cojali**

INDEX

04 **JALTEST
TELEMATICS**

06 **COVERAGE**

12 **SOFTWARE**

26 **HARDWARE**

28 **COJALI**

THE TECHNOLOGY THAT
KEEPS YOUR FLEET MOVING



JT
TELEMATICS



THE ULTIMATE SOLUTION
FOR FLEET CONTROL

JALTEST TELEMATICS

Jaltest Telematics enhances any fleet solution with advanced remote diagnostics, offering:

- Fewer breakdowns through a customizable interface that delivers real-time insights tailored to each user's role.
- Predictive maintenance to detect and prevent failures before they occur.
- Remote, on-the-go repairs to keep vehicles operational and reduce downtime.



COVERAGE

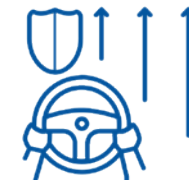
CONNECTIVITY SOLUTIONS
POWERED BY JALTEST
DIAGNOSTICS EXPERTISE



DATA-DRIVEN
DECISION-MAKING



COST SAVING
& EFFICIENCY
INCREASE



SAFETY
REINFORCEMENT



PREDICTIVE
MAINTENANCE



REDUCE REPAIR
AND DOWNTIMES



TOTAL COST OF
OWNERSHIP
REDUCTION



COMMERCIAL VEHICLES

Jaltest Telematics adapts to any fleet sector, including freight, refrigerated transport, passenger transit, last-mile delivery, urban services, agriculture, construction, and mining.



UNLOCK THE FULL POWER OF YOUR FLEET WITH FEATURES SUCH AS:

- ✓ Remote diagnostics
- ✓ Predictive maintenance
- ✓ Driving optimization
- ✓ Fleet control and cost reduction

And much more...



SOLUTIONS FOR OTHER SECTORS



Jaltest Telematics delivers custom projects for OEMs and agri-businesses, tailored to their specific operational needs. Our solutions enable you to:

1. Access key data from both the machine and the task performed.
2. Run remote diagnostics and live sensor readings in real time.
3. Plan, manage, and monitor entire agricultural seasons.
4. Execute comprehensive agronomic management across your operations.

€

COST CONTROL

🎯

PRECISION AGRICULTURE

📈

EFFICIENCY INCREASE

🔧

DIAGNOSTICS:

🕒

REDUCTION OF REPAIR TIMES

🛠️

PREDICTIVE MAINTENANCE

🔊

COMPREHENSIVE SEASON PLANNING

📋

Task controller.

👥

Personnel control.

🏠

Management of equipment and materials.

📅

Management of clients, fields and farms.



Jaltest Telematics develops tailored solutions for OEMs and companies in the construction sector, built around their real-world needs. Our technology helps you:

1. Track asset location and monitor task performance.
2. Oversee operations and conduct real-time tracking.
3. Manage your fleet using accurate, real-time data.
4. Perform remote diagnostics and access live measurement readings.

📍

LOCATION

🕒

TIMES

🛢️

FUEL

🛠️

PREDICTIVE MAINTENANCE

🔧

REMOTE DIAGNOSTICS

📈

EFFICIENCY

✓

FLEET STATUS VERIFICATION

🛠️

MAINTENANCE





ACCESS REAL-TIME FLEET DATA
ANYTIME, ANYWHERE



SOFTWARE

With the Jaltest Telematics cloud-based platform, fleet information is always at your fingertips—on any PC or mobile device. Our intuitive app empowers drivers, technicians, fleet managers, and clients to easily view, analyze, and interact with live data for smarter, faster decisions.



JALTEST
TELEMATICS
APP WITH
LOCATION
ACTIVATED



PORTAL
MIRRORING



INTEGRATIONS
THROUGH API



ADVANCED
ANALYTICS
THROUGH
DATA SCIENCE

GRAPHICAL USER INTERFACE

USER-FRIENDLY,
VISUAL, INTUITIVE

DESIGNED
TO WORK IN
REAL TIME

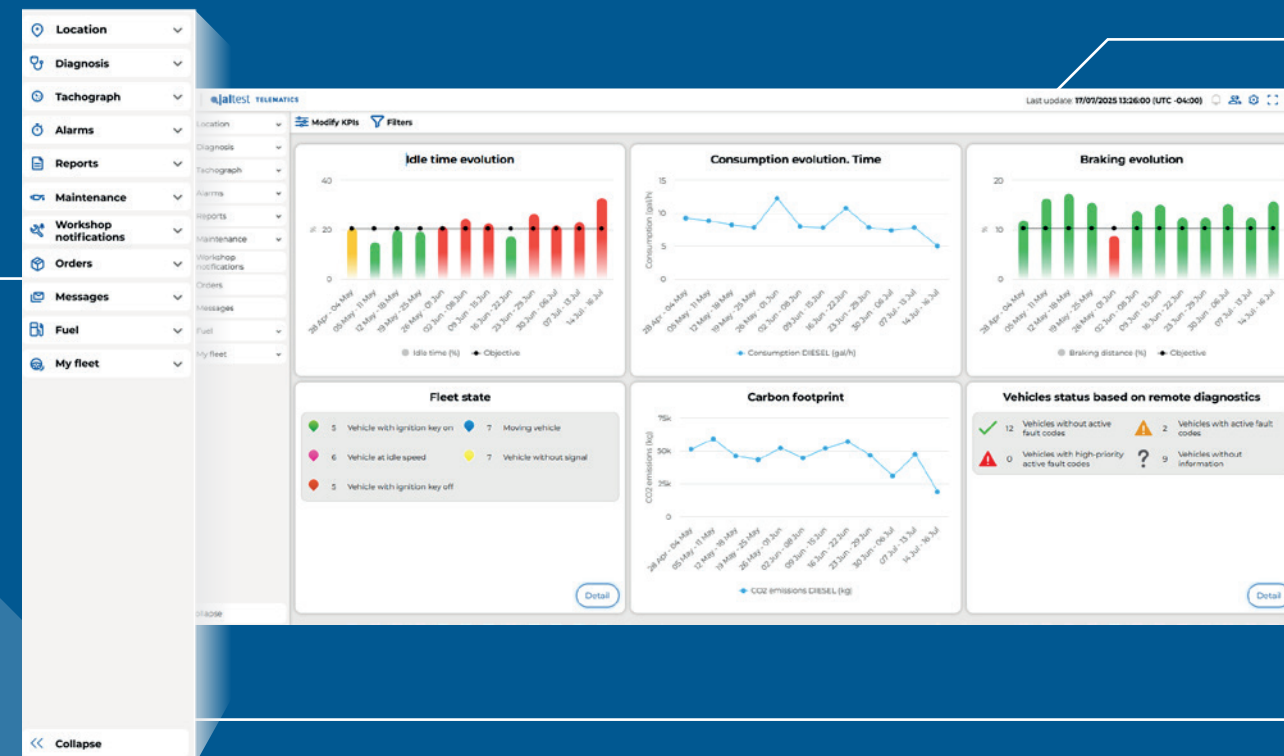


EASY USE

ON ANY DEVICE

MORE THAN TELEMATICS

Jaltest Telematics provides access to all the information in real time, which implies an added value to obtain a more intelligent, efficient, sustainable, safe and cost-effective fleet.



- Location
- Diagnostics
- Predictive
- Alarms
- Reports

- Maintenance
- Notifications to the workshop
- Orders
- Messages

- Fuel
- My fleet
- Cold chain
- TPMS

FEATURED MODULES

Remote Diagnostics

The screenshot displays the JALTEST Telematics web application. The left sidebar contains navigation menus for Location, Diagnosis, Vehicle status, Advanced diagnosis, Brake status, Instrumentation status, Customisation, Tachograph, Alarms, Reports, Maintenance, Workshop notifications, Orders, Messages, Fuel, and My fleet. The main content area shows a 'Detail' view for a vehicle with ID 4879MCD, a Renault D Series V3 Euro 6 (10-26) from 30/04/2025. A status bar at the top of the main area shows various system health indicators (green checkmarks and yellow triangles) for components like Engine, Antipollution, Gearbox, Brakes, Suspension, Central computer, Antitheft, Audio system, Chassis module, Climate HVAC, Compressed air processing, Data registration, telematics and FMS, and Electronic module. Below this, a section titled 'System: EBS 5, Electronic Braking System. Vehicle: 4879MCD' lists active fault codes. Two fault codes are shown: P5D41 FM134 (Electronic stability program (ESP). Passive circuit / passive mode. Special instructions) and SID5 FM130 (Wheel Sensor ABS Axle 3 Left. Abnormal rate of change). Both have one occurrence and were last read on 30/04/2025 at 13:08:43. At the bottom, a table lists various measures and their values.

Group	System type	Measure	Help	Value	Reading date
<input type="checkbox"/>	Antipollution	ADBLUE/DEF TANK LEVEL	?	100 %	30/04/2025 13:06:41
<input type="checkbox"/>	Antipollution	ADBLUE/DEF TEMPERATURE IN THE TANK	?	27 °C	30/04/2025 13:06:41
<input type="checkbox"/>	Antitheft	WARNING LAMP STATE, ORANGE LAMP	?	No data available	30/04/2025 13:14:00
<input type="checkbox"/>	Antitheft	WARNING LAMP STATE, PROTECTION LAMP	?	No data available	30/04/2025 13:14:00
<input type="checkbox"/>	Antitheft	WARNING LAMP STATE, RED LAMP	?	No data available	30/04/2025 13:14:00
<input type="checkbox"/>	Brakes	ABS CONTROL, ABS WARNING LAMP	?	No data available	30/04/2025 13:08:43
<input type="checkbox"/>	Engine	ADBLUE/DEF FLUID QUALITY, UREA CONCENTRATION	?	33 %	30/04/2025 13:06:04

UNIQUE SOLUTION
IN THE MARKET

OEM SPECIFICATIONS
& REPAIR INFO

VEHICLE
STATE-OF-HEALTH

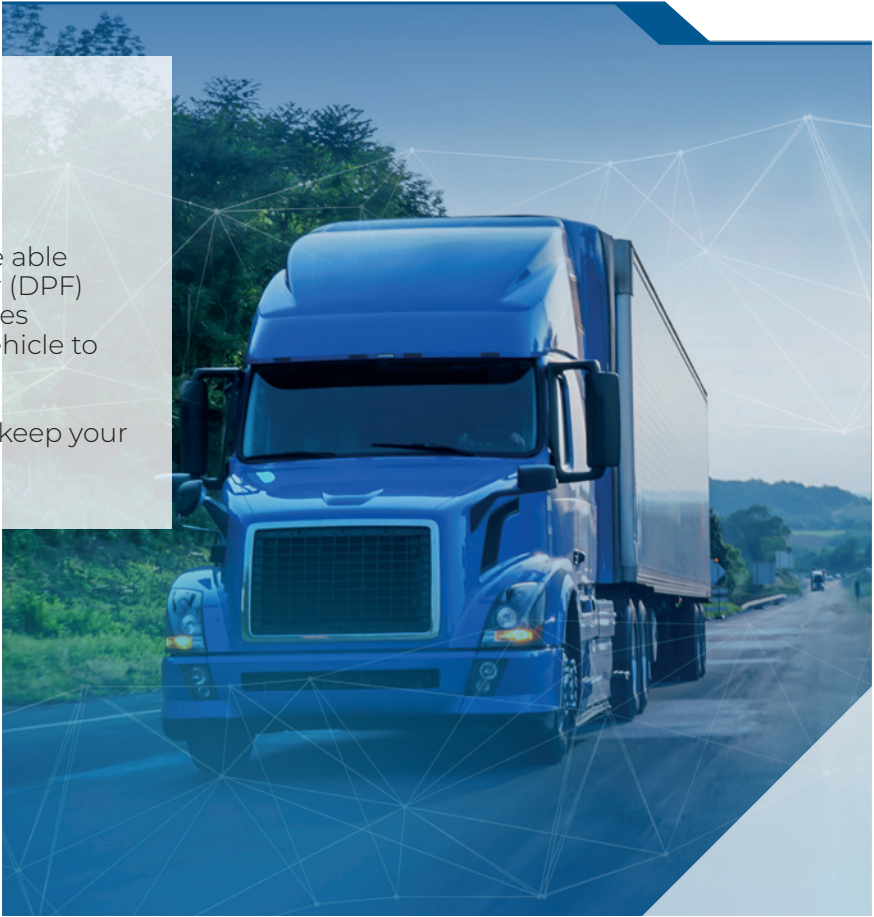
ALL MAKES AND
ALL MODELS

Advanced Functionalities

- Clear fault codes
- Remote DPF Regenerations
- Reset system status
- Live data

With Jaltest Telematics, you will be able to perform Diesel Particulate Filter (DPF) regens and advanced functionalities remotely—no need to bring the vehicle to the shop.

Save time, reduce downtime, and keep your fleet moving!

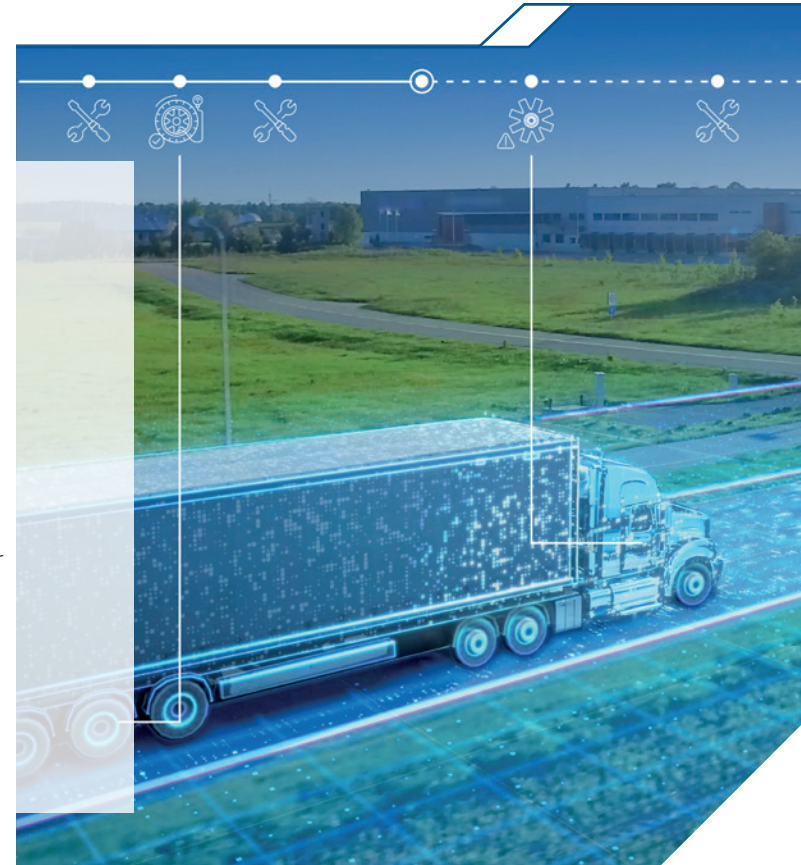


FEATURED MODULES

Predictive Maintenance

Predictive Maintenance with AI
Jaltest Telematics uses Artificial Intelligence to analyze vehicle data and predict how long parts will last based on usage and maintenance history.

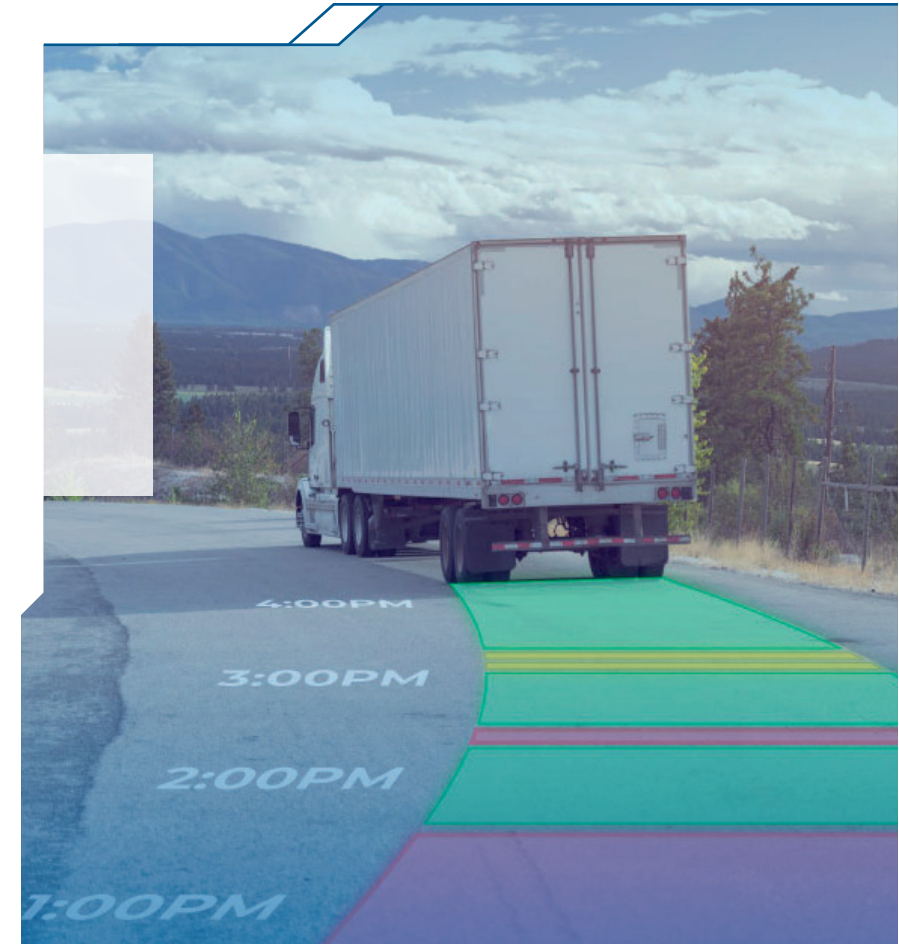
- Extend component life and optimize maintenance.
- Prevent breakdowns, reducing roadside assistance by up to 20%.
- Minimize downtime by up to 42% and lower your carbon footprint.



GPS Tracking

Full Control at Your Fingertips.

- Real-time location tracking
- Route history and playback
- Geofence alerts for entry/exit zones
- Ignition on/off status monitoring
- Stop and idle time tracking



ARTIFICIAL INTELLIGENCE APPLIED
TO FLEET MANAGEMENT

FEATURED MODULES

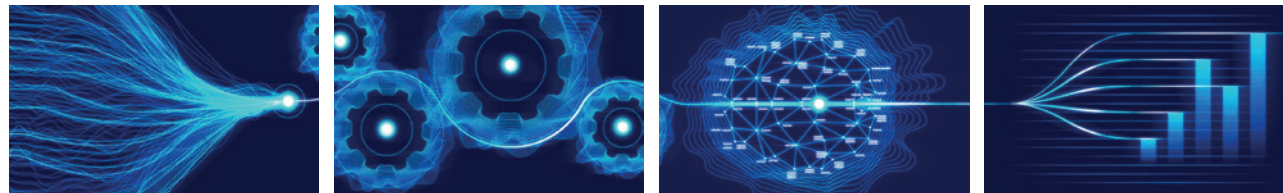
Smart Driving

Jaltest Telematics offers a new approach to efficient driving, using all the information reported by the vehicle and exclusively related to the driver's performance.

HOW DOES IT BENEFIT YOUR FLEET?

- Consumption reduction up to 10% in driving and 5% in planning operations by model/route.
- Driver's ranking based on performance.
- Route difficulty characterisation and impact on consumption.
- Driving assessment without route, load status or vehicle bias.
- Operation optimisation based on the data obtained.
- Enhance safety by analyzing driver behaviour

HOW DOES JALTEST TELEMATICS ACHIEVE THOSE RESULTS?



DATA INTAKE

DATA IN CONTEXT

ANALYTICS

INTELLIGENCE

Reports

Jaltest Telematics offers a comprehensive business intelligence solution based on a collection of reports that allow full coverage of the fleet activity.

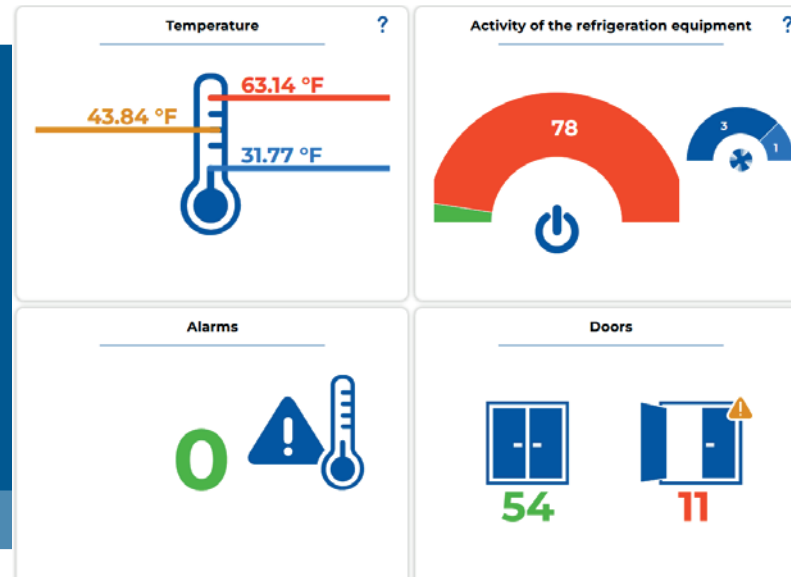
- TRIP AND ROUTE REPORT
- HEALTH AND DIAGNOSTICS REPORT
- FUEL CONSUMPTION REPORT
- VEHICLE UTILIZATION REPORT
- IDLE TIME REPORT
- GEOFENCE VIOLATION REPORT
- ASSET LOCATION REPORT
- EVENT/ALERT SUMMARY REPORT
- AND MUCH MORE...



FEATURED MODULES

Cold Chain

Jaltest Telematics ensures real-time temperature tracking and door status monitoring, with instant alerts if conditions exceed set limits. Ensures compliance, protects against claims, and safeguards cargo integrity throughout the journey.



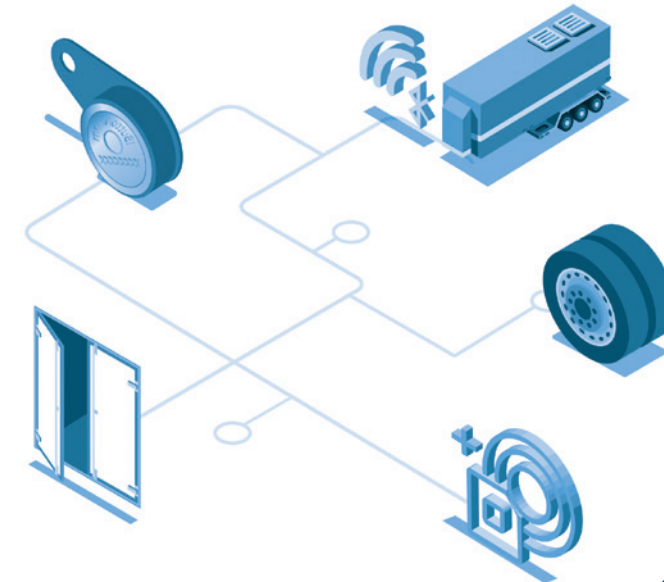
THERMOGRAPH CONNECTION

Fully compatible with any thermograph installed, Jaltest Telematics ensures seamless cold chain monitoring without additional hardware or integration issues — safeguarding product quality and regulatory compliance.

TPMS & Sensing

DRIVER
IDENTIFICATION
IN VEHICLES

DOOR
OPENING AND
CLOSING



IDENTIFICATION
AND LISTING OF
SEMI-TRAILERS WITH
TRAILER ID

TPMS &
TEMPERATURE

ADDITIONAL
SENSORS

FEATURED MODULES

Alarms & Maintenance Scheduling

STAY AHEAD OF PROBLEMS
AND REDUCE DOWNTIMES

- ✓ Seamless Remote Alarm Configuration and Maintenance reminders.
- ✓ Connect fleet operators with the nearest workshop in real time to schedule repairs.
- ✓ Trigger alerts using live data measurements
- ✓ Maintenance planning with proactive insights and warnings

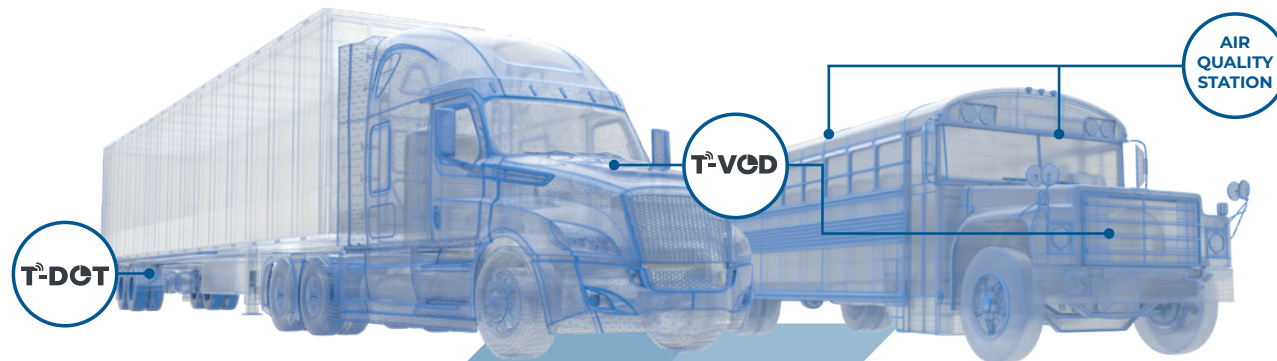


Electric Vehicle

Jaltest Telematics tackles the challenges of EV integration by combining real-time data from energy management control units with comprehensive CAN bus information — delivering advanced, precise system monitoring for electric fleets.



HARDWARE



T-DOT



Telematics Diagnostics Onboard Trailer. Telematics unit specially designed for trailers.



T-VOD



Telematics Vehicle Onboard Diagnostics. Combined telematics and diagnostics unit on-board for commercial vehicles.



AIR QUALITY STATION



Indoor and outdoor air quality stations.



OTHER DEVICES

- ✓ Temperature/Temperature and humidity/ Temperature, humidity and light Bluetooth sensors
- ✓ Cable temperature and humidity sensors
- ✓ Inductive sensor
- ✓ Door opening and closing sensor
- ✓ Lighting sensor
- ✓ i-Button
- ✓ Trailer ID
- ✓ TPMS. Tyre pressure and temperature sensor

COJALI

Cojali S.L., headquartered in Campo de Criptana, Spain, is a multinational manufacturer of components, electronics and digital solutions. The company specializes in advanced diagnostics, connectivity, and remote diagnostics solutions for commercial vehicles, agricultural equipment, off-highway machinery, material handling equipment, and vessels. Additionally, Cojali develops ISOBUS compatibility solutions for tractors and implements and it is also actively working on data processing and analysis, being this a strategic business activity.

Cojali USA, the company's first subsidiary outside Europe, has experienced strong growth since its launch. Based in South Florida, it serves the U.S., Canada, and parts of Central and South America with a rapidly expanding team.



+600
WORKERS



135
COUNTRIES



HEAD OFFICE



SPAIN



BRANCHES



FRANCE



ITALY



USA



INDIA



SALES OFFICES



GERMANY



MEXICO



TURKEY

COJALI. INTERNATIONAL PRESENCE

cojali
INNOVATION & TECHNOLOGY

jaltest
SOLUTIONS

cojali

DIAGNOSTICS



DIAGNOSTICS



TECHNICAL
DATA



TECHNICAL
SUPPORT



TRAINING

TELEMATICS



REMOTE
DIAGNOSTICS



PREDICTIVE
MAINTENANCE



CONSULTING



TECHNICAL
SUPPORT

ISOBUS



ISOBUS IMPLEMENT
CONTROL



ELECTRONICS OF
IMPLEMENTS

TOOLS



ADAS CALIBRATION
EQUIPMENT
AND TEST



ELECTRICAL AND AUXILIARY
EQUIPMENT



SPECIAL TOOL



PRECISION AND AUXILIARY
TOOLS

UNIVERSITY



CLASSROOM
TRAINING



E-LEARNING
TRAINING



WEBINARS

PARTS



COOLING SYSTEMS



SUSPENSION AND BRAKE
SYSTEM



TRANSMISSION AND POWER
SYSTEMS



REPAIR KITS



ELECTRONIC & ELECTRICAL
COMPONENTS



REMAN

OEM SOLUTIONS



DIAGNOSTICS



TECHNICAL DATA



TELEMATICS



COMPONENTS



ELECTRONIC & ELECTRICAL
COMPONENTS



DATA
SCIENCE



jaltest.com

cojali.com

telematics@cojaliusa.com

+1 (305) 960-7651

2070 NW 79th Ave.

Doral, Florida

33122